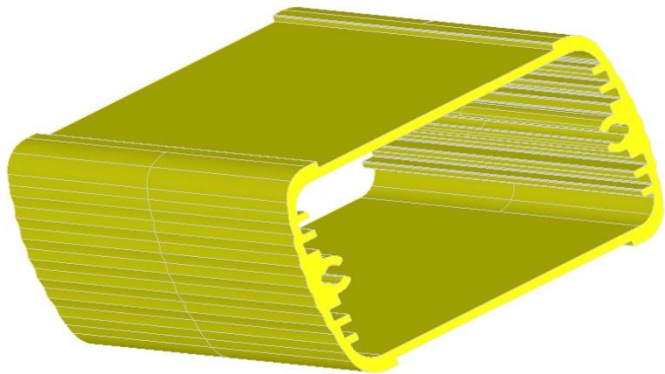


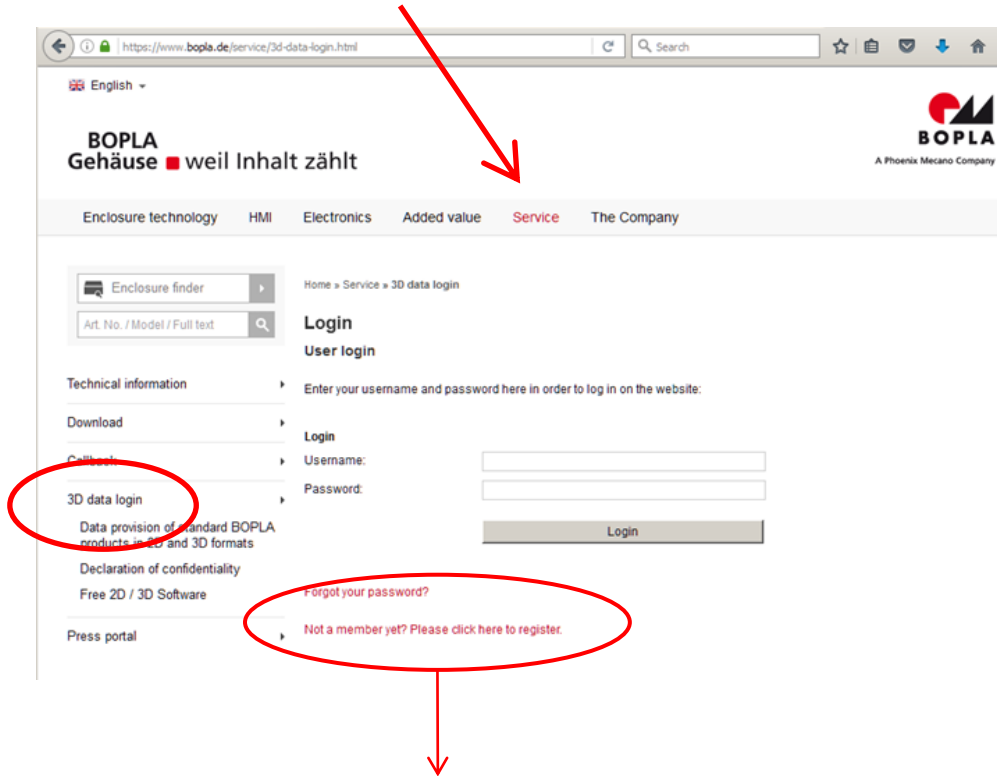
3D-tuotedataa (.stp) sivulta www.bopla.de

Kuinka rekisteröidyn? Mistä voin ladata 3D-dataa?

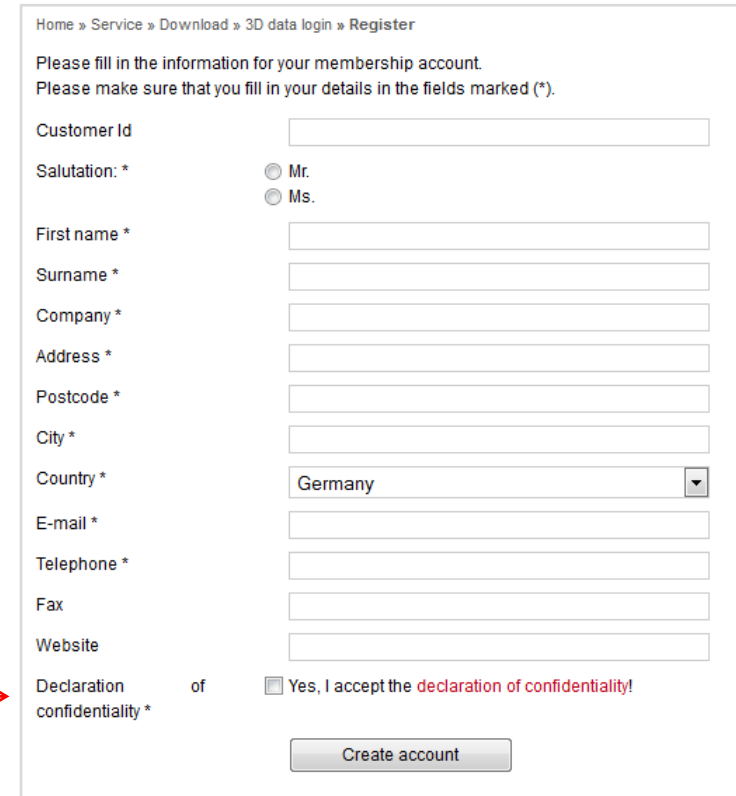


BOPLA
enclosures ■ content matters

1) Klikkaa ensin "Service" ja avautuvasta valikosta "3D data login"



2) Klikkaa "Not a member yet? Please click here to register." (lomake täytyy täyttää vain ensimmäisellä kerralla.)



The screenshot shows the registration form on the BOPLA website. The form is titled 'Home » Service » Download » 3D data login » Register'. It contains the following fields and options:

- Customer Id:
- Salutation: * Mr. Ms.
- First name *:
- Surname *:
- Company *:
- Address *:
- Postcode *:
- City *:
- Country *:
- E-mail *:
- Telephone *:
- Fax:
- Website:
- Declaration of confidentiality *: Yes, I accept the **declaration of confidentiality!**

At the bottom of the form is a 'Create account' button.

3) Kun olet täyttänyt lomakkeen, saat tällaisen sähköpostin.

Betreff: Please confirm your registration with www.BOPLA.de.

Dear Mrs. Larissa Wiesing,

Thank you for your application to become a member of www.BOPLA.de. Everyone is welcome to browse around our website, but you need to confirm your membership to have unrestricted access to all areas. To confirm your membership, please click on this link

http://www.bopla.de/en/service/download/3d-data-login/confirm.html?tx_srfeuserregister_pi1%5BregHash%5D=4961bb91ebf2902e908a

(Please click on this link or copy and paste it into your browser.)

You are receiving this e-mail because we want to be certain that the e-mail address entered is correct and that no other person but the user of this address can register. If you have received this e-mail but you do not want to register with us, please click on the following link to stop the registration process and to remove your address from our database:

http://www.bopla.de/en/service/download/3d-data-login/confirm.html?tx_srfeuserregister_pi1%5BregHash%5D=b540aee2e96cbd4bb819

(Please click on this link or copy and paste it into your browser.)

This allows us to guarantee that nobody else can register using your e-mail address. We apologise for any inconvenience we may have caused you.

Welcome to
www.BOPLA.de
<<http://www.bopla.de/>>
3d-daten@bopla.de

4) Anna vahvistus
klikkaamalla tätä linkkiä,
näin aktivoit tilisi.

Betreff: Thank you for registering with www.BOPLA.de.

Dear Mrs. Larissa Wiesing,

Thank you for registering with www.BOPLA.de.

Your membership lwiesing@bopla.de has been confirmed.

Your e-mail address lwiesing@bopla.de has been added to our database.

Preferred username: lwiesing@bopla.de

Password: b40a14

Welcome from us all at
www.BOPLA.de
<<http://www.bopla.de/>>
3d-daten@bopla.de

5) Kirjautumistunnukset lähetetään
sähköpostiisi automaattisesti.

6) Nyt voit kirjautua järjestelmään omilla tunnuksillasi,
mene sivulle: <https://www.bopla.de/service/3d-data-login.html>.

[Home](#) [Contact](#) [3D data login](#) [Callback](#) [Technical information](#) [Search](#) 

BOPLA
enclosures ■ content matters



BOPLA
A Phoenix Mecano Company

[Enclosure technology](#)


[Membrane keypads](#)

[Electronics services](#)

[Service](#)

[The Company](#)



<input type="text"/>
Enclosure finder 
Services
Technical information
Download
Catalogs
Specialist reports
BOPLA press reports
3D data login
Declaration of confidentiality

[Home](#) » [Service](#) » [Download](#) » 3D data login



Login

User login

Enter your username and password here in order to log in on the website:

Username:

Password:

Login

[Forgot your password?](#)

[Not a member yet? Please click here to register.](#)

[Home](#) » [Service](#) » [Download](#) » 3D data login

Login

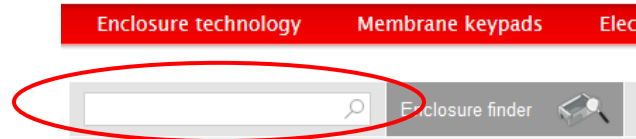
Login successful

You are now logged in as 'lwiesing@bopla.de'

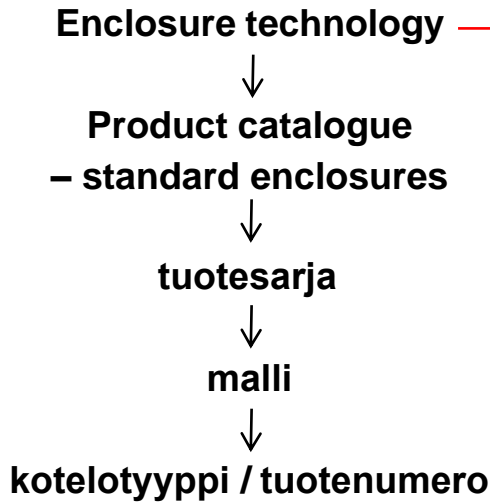
[Click here to edit your profile or to delete your account.](#)

3D-data löytyy jokaisen tuotteen yhteydestä.

Jos tiedät tuotenumeron / tyypin, käytä hakukenttää.



Jos et tiedä, seuraa alla esitettyjä vaiheita löytääksesi halutun kotelon:



Home Contact 3D data login Callback Technical information Search

BOPLA
enclosures ■ content matters



A Phoenix Mecano Company

Enclosure technology Membrane keypads Electronics services Service The Company

Enclosure finder

Product catalogue standard enclosures

Alu-Topline

Alubos

Alubos 600 enclosure profiles

Alubos 800 enclosure profiles

Alubos 820 enclosure profiles

Alubos 1000 enclosure profiles

Alubos 1040 enclosure profiles

Alubos 1300 enclosure profiles

Alubos 1600 enclosure profiles

Alubos 1680 enclosure profiles

Alubos 2070 enclosure profiles

Home » Enclosure technology » Alubos » Alubos 600 enclosure profiles

Alubos 600 enclosure profiles

Enclosure profiles, closed

Model	Order no.	A	B	C
ABP 600-0100	84060100	57	32	100
ABP 600-0150	84060150	57	32	150
ABP 600-0200	84060200	57	32	200
ABP 600-1000	84060000	57	32	1000

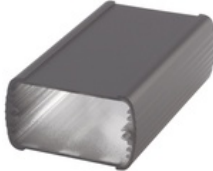
Note: C = profile length, special lengths on request.
Accessories: See following pages.
Scope of delivery: Enclosure profile

Löydät halutun 3D-datan kohdasta
“Technical drawings”.

Jos suora lataaminen epäonnistuu ja
ruutuun avautuu tekstikenttä, klikkaa
hiiren oikeaa näppäintä ja valitse
“Save target as.../
Store target under...”
ladataksesi tiedot koneellesi.

Home » Enclosure technology » Alubos » Alubos 600 enclosure profiles » ABP 600-0100

ABP 600-0100



Alubos 600 enclosure profiles
Enclosure profiles, closed

Order no.: 84060100

Add to the shopping basket

Download product data sheet as a PDF

Colour of enclosure group Black, similar to RAL 9005; special colours on request

Protection class ABP, ABPH: up to IP 65/DIN EN 60529; ABPU: IP 40/DIN EN 60529

Enclosure material Extruded profiles: Al Mg Si 0.5 powder-coated; diecast lid: GB Al Si 12, powder-coated; seal: TPE; for details see Technical Information

Scope of delivery: Enclosure profile

Note: C = profile length, special lengths on request.
Accessories: See following pages.

A	57 mm
B	32 mm
C	100 mm

Technical drawings

Catalogue drawing in DXF format:
[84060100_ABP-600-0100.dxf](#) (1.1 MB)

Catalogue drawing in PDF format:
[84060100_ABP-600-0100.pdf](#) (104 KB)

3D product data in STEP format:
[84060100_ABP-600-0100.stp](#) (1.1 MB)

Basic drawing for processing:
[84060100_ABP-600-100-G](#)

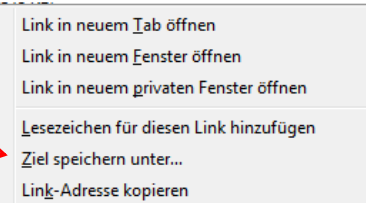
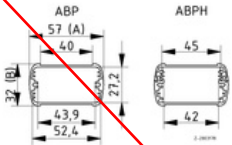
Basic drawing for processing:
[84060100_ABP-600-0100-](#)

Assembly instructions

[Alubos-ABPH-...-...pdf](#) (124 KB)

[Alubos-ABM-...-SAL\(-BE\).p](#)

[Alubos-AB-WL-...-...pdf](#) (195 KB)



Voit ladata maks. 10 tiedostoa päivässä.

Ota yhteyttä, jos tarvitset enemmän kuin 10 tiedostoa päivittäin tai jos sinulla on mitä hyvänsä kysyttävää tuotetiedoista.

Bopla Gehäuse Systeme GmbH
Borsigstr. 17-25
D-32257 Bünde
Tel.: +49 (0) 5223 969-0
Fax: +49 (0) 5223 / 969-100
info@bopla.de
www.bopla.de

